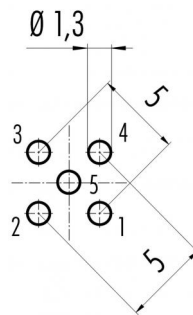


Product description	<b>M12-A female panel mount connector, Contacts: 5, not shielded, dip-solder, IP68, UL, PG9, front mounting</b>
Area	<b>M12-A series 713</b>
Order number	<b>86 4832 3000 00005</b>

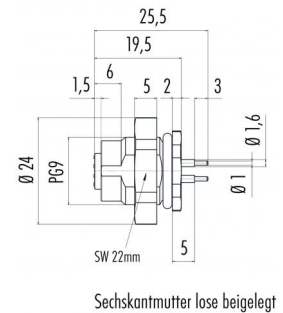
### Illustration



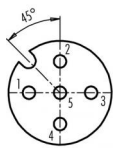
### Conductor layout



### Scale drawing



### Contact arrangement (Plug-in side)



	X	Y
1	-2,50	0,00
2	0,00	2,50
3	2,50	0,00
4	0,00	-2,50
5	0,00	0,00

- 1 braun/brown
- 2 weiß/white
- 3 blau/blue
- 4 schwarz/black
- 5 grau/grey

Geschirmte Versionen: Schirm auf Gehäuse  
Shielded versions: shield on housing

**You can find the assembly instructions on the next page.**

## Technical data

### General values

#### Notice

Please note that, due to the change from the old to the new order number, there may be deviations in the technical specifications. For questions about product details, please use the 'Contact Customer Service' form on the right.  
female panel mount connector  
screw  
dip-solder  
85 °C  
- 40 °C  
85369010  
20

Connector design  
Connector locking system  
Termination  
Upper limit temperature  
Lower limit temperature  
Customs tariff number  
Packaging Unit

### Cable data

Approval 1

UL

### Electrical values

Rated current (40 °C)  
Rated voltage  
Rated voltage UL  
Rated impulse voltage  
Pollution degree  
Overvoltage category  
Insulating material group  
Insulation resistance  
EMC compliance  
Degree of protection  
Mechanical operation

4 A (3 A UL)  
60 V  
125  
1500 V  
3  
II  
III  
> 10<sup>8</sup> Ω  
not shielded  
IP68  
> 100 Mating cycles

### Material

Contact material  
Contact plating  
Contact body material  
Housing material  
Locking material  
REACH SVHC

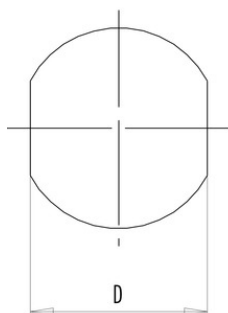
CuSn (bronze)  
Au (gold)  
PA  
PA  
plastic  
CAS 7439-92-1 (Lead)

Product description **M12-A female panel mount connector, Contacts: 5, not shielded, dip-solder, IP68, UL, PG9, front mounting**

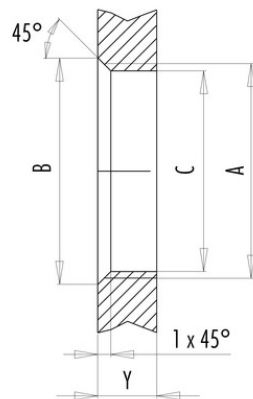
Area **M12-A series 713**  
Order number **86 4832 3000 00005**

## Assembly instructions / Panel cut-out

With flats as anti-rotation device



With bore hole



Installation direction:  
o-ring sits on chamfer.

Thread	Measures			Tightening torque	
	B (mm)	C (mm)	D (mm)	Metal housing/ Positioning sleeve	Plastic housing/ Positioning sleeve
PG 9	16,2	15,3	13,5	1,25 Nm	1,25 Nm
PG 11	20,2	18,7	17,0	2 Nm	–
PG 13,5	21,5	20,5	–	2 Nm	–
M12 x 0,5	–	12,1	–	–	0,4 Nm
M12 x 1	–	12,2	–	1 Nm	–
M14 x 1	15,2	14,2	–	1,25 Nm	–
M16 x 1,5	17,0	16,1	13,5	1,25 Nm	1,25 Nm
M20 x 1,5	21,0	20,1	–	2 Nm	1,25 Nm

Thickness of wall Y (mm)		
Version	min (mm)	max (mm)
Fastened from back side	2	3,5
Front fastened	2	4,5
Positioning possible <sup>1)</sup>	2	3,5
Screw clamp	2	3,5
Thread M12 x 1	2	3,0
Thread M14 x 1 <sup>2)</sup>	<sup>3)</sup> 1,5/ <sup>4)</sup> 2	6,5

### Notes

- <sup>1)</sup> Do not attach a chamfer
- <sup>2)</sup> Wall thickness:  
use locknut 01-5385  
up to 1,5 mm,  
>1,5 mm cut thread
- <sup>3)</sup> Nut
- <sup>4)</sup> Thread in wall of housing

Product description	<b>M12-A female panel mount connector, Contacts: 5, not shielded, dip-solder, IP68, UL, PG9, front mounting</b>
Area	<b>M12-A series 713</b>
Order number	<b>86 4832 3000 00005</b>

## Security notices

The connectors are designed for use in plant, control system and electrical equipment. The end user is responsible for checking whether the connectors are suitable for use in other applications.

Connectors with degree of protection IP 67 and IP 68 are not suitable for use under water. When used outdoors, the connectors must be separately protected against corrosion. For further information about IP degrees of protection refer to 'Technical support' in the Download Centre.